

**ADVANCED DIGITAL APPAREL  
AND TEXTILE PRINTING SOLUTIONS**





## APPAREL & TEXTILE printing solutions



### Bed size - accommodates multiple platen configurations

Designed to suit most common cut material sizes in fashion products. Heavy duty production to finished garments for greater production through-put.

**M2**  
420 x 610mm

**M6**  
650 x 1137mm

## MAKING CUSTOMERS SUCCESSFUL FOR OVER A DECADE

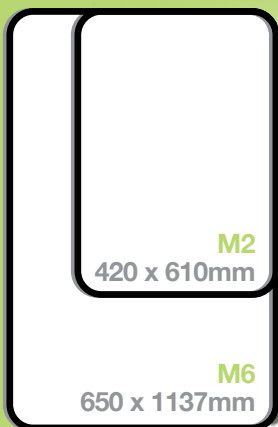
With innovative inkjet engineering solutions specifically designed to meet the needs of our customers.

There are more than 8,000 of our machines installed around the world, which is testimony to our expertise and our customer's confidence in us. As the largest manufacturer of textile printing equipment in our category we also have a global network of subsidiaries, distribution and service support centres at our disposal. This guarantees local availability, whether it's pre-sales application tests, on-site installation or service requests. This network also allows us to implement large international customer projects quickly and economically.

DTG Digital has been an industry leader in direct to garment inkjet technologies for over a decade. Whether you are a new start company, a large volume promotional or fashion production house, or you are considering to compliment your existing business, at DTG digital we can provide tailored solutions that match your requirements.

As an industry leader, our commitment to research and development continues to advance the digital garment printing industry and set new industry standards, therefore providing a better experience for our global customer community.

The DTG brand is well known globally as the leading innovator in the garment decorating industry. There are more successful apparel printing companies using DTG Digital printers than any other brand.





BETTER PRINTERS • BETTER INKS • BETTER COLOR • BETTER CHOICE...

## M-SERIES INDUSTRIAL

The DTG M-Series range of Direct to Garment Inkjet printers delivers the industries most advanced print platform engineered specifically for textile applications.

Greater resolutions and ink drop technologies are delivered through an entirely new firmware – print a completely new range of products with scalable platens from 2-12 shirts, print all over jeans, hoodies or clothing panels from one printer series! It's entirely flexible, engineered for production, and will grow with you. It's FAST.

The M-Series outputs more without compromising resolutions or print quality – screenprinters, embroiderers, internet shops, photographers, print shops and designers all finally have a solution that's industrial and flexible! It's a different science and the M-Series delivers greater profit opportunity.



### New IQ Print Pro Color RIP



Print quality and features within a RIP – do make a difference to

your overall design – if color and knock out graphics are important to you and your customers, then the new iQRip for the Mseries will leave you breathless.



**pigment.®inc**  
digital... inks and coatings

At DTG Digital “we know textiles” and the right ink does make all the difference. DTG Digital works in collaboration with Pigmentinc® exclusively.

### WHAT IS YOUR TEXTILE APPLICATION?

#### TYPICAL INDUSTRIES

- ➔ Fashion panels
- ➔ Soft furnishings
- ➔ Promotion
- ➔ Hi Vis workwear
- ➔ Sportswear
- ➔ Team wear
- ➔ Handicrafts
- ➔ Fashion strike off
- ➔ Internet sales
- ➔ Sports Apparel
- ➔ Corporate wear
- ➔ Fabric signage
- ➔ Home furnishings
- ➔ Textile displays
- ➔ Jeans
- ➔ Advertising materials
- ➔ Bedding
- ➔ Baby clothes
- ➔ Sleepwear
- ➔ Sampling
- ...and many more





**WITH MORE THAN 8,000 MACHINES INSTALLED AROUND THE WORLD**

## WEB BASED

The direct to garment business is ideal for internet sales, building of customer databases and mailing lists. A lot of orders printed on direct to garment printers are short run, the average order being < 5 garments per sale. The orders are usually highly customized and multi colored. Traditional printing methods cannot easily cater for these print requirements.

There are ready made tools available that allow you to start your online business as either a single website or as a multi-tier affinity website system whereby you can literally have hundreds of websites selling your product.

We highly recommend that you research DecoNetwork for instant online sales, design and marketing opportunities.

## SHOP FRONT

Shop front apparel decoration businesses have been around for many years, this alone is a clear sign that if properly planned and executed a shop front based business can be highly successful.

As with any store front business – there are three very important factors to consider, in order to maximize the potential for your business. They are – location, location, location.

Direct to garment printing is ideal for walk in business as a garment decorator. The ability to quickly go from computer screen to garment in a matter of minutes allows you to either fulfill the order or get a commitment on the spot, try doing that with screen printing.

## Over 1000 Royalty FREE T-shirt Designs



**Download latest trend street wear designs for DTG printing**  
[www.downloaddtgdesigns.com](http://www.downloaddtgdesigns.com)

**A SUCCESSFUL  
DTG BUSINESS IS  
MORE THAN A C**

**You'll  
a rel  
DTG P**



**Support and  
training by  
the largest  
producer of  
DTG printers  
globally**



**Designs that  
people will  
BUY and  
keep coming  
back for**

**MAKING CUSTOMERS  
FOR OVER**

**DTG Digital has a mission  
with the most diverse range of  
requirements to become**



# AND THE WORLD - A TESTAMENT TO OUR EXPERTISE

FUL ONLINE  
ESS NEEDS...  
GREAT PRINTER

DTG  
DIGITAL

need  
iable  
printer

DTG  
DIGITAL

THINKING®

pigment.inc  
digital... inks and coatings

**Superior  
inks that  
outperform  
your  
competition**

 DecoNetwork™

**A good looking  
easy to navigate  
webstore with an  
online designer**

ERS SUCCESSFUL  
A DECADE

sion to help companies  
range of textile printing  
come more profitable.

## FASHION STRIKE OFF

A huge emerging market is the fashion industry which is now turning to DTG printing methods in order to create limited but very high margin product ranges. Fashion ranges can be branded for specific events, inventory can be controlled by producing limited numbers for certain shops only. This is particularly true in the street wear industry.

One of the biggest growth areas in the fashion industry is the ability to generate instant strike-offs. Allowing the digital artist to create, print and produce their own products.

Increasing demand for panel prints with white inks for fashion companies is now available for medium to large production platforms.

## CONTRACT PRODUCTION

DTG printing does not have to be solely about retail or B2B sales. There is a huge amount of contract production that can be generated through like minded businesses who may not ever wish to implement in house DTG production, but who still have a need for a DTG printing service.

Consider all your local, embroidery, screenprint, promotional, signage, trophy, uniform, streetwear, workwear and even event management businesses. It is unrealistic to think that they would all run their own DTG machines. Make contact with them, offer your services and develop relationships, who knows? There could be a huge opportunity for a reciprocal business relationship that can generate a stable income.

 DecoNetwork™ **On-Line Biz Tools**

[www.deconetwork.com](http://www.deconetwork.com)

**With over 15,000 decorating websites. Start your ecoNetwork website business today!**





# M SERIES INDUSTRIAL - ADVANCED DIGITAL APPAREL

## M6 INDUSTRIAL



Better engineered, ink management, brighter prints, faster production, more flexibility and easier to use without the maintenance levels currently experienced in the market - that's the DTG M SERIES!

## M2 INDUSTRIAL



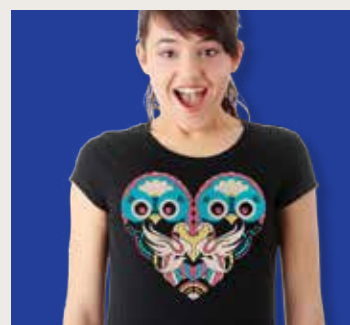
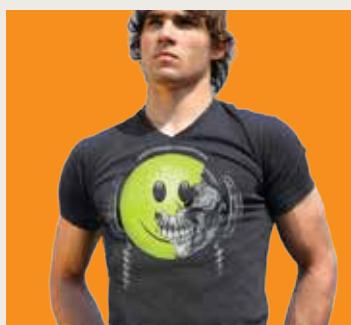
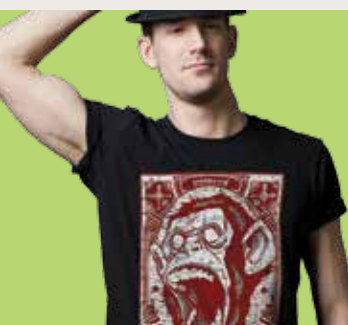
## INDUSTRIAL

The industrial class DTG M2/M6 printers are the culmination of 10 years of R&D and garment printer development, they deliver the industry's most advanced, user friendly and precise print platform specifically designed for textile applications, whilst retaining the revolutionary WIMS system (white ink management) and One Pass print technology that have made DTG Digital an industry leader.

The M2/M6 series machines are designed with bespoke firmware specifically created for optimal print quality at higher production speeds by utilizing greater ink droplet control and accurate placement on the garment.

Simply put, the M series output more without lowering print quality, it's a better science!

Print all over T-shirts, hoodies, tea towels, mouse mats, bags, jeans, cloth panels and more. The productivity, flexibility and throughput is limited only by your imagination, creating greater profit opportunities for you. The DTG M2/M6, an industry benchmark that will grow with you!



# EL AND TEXTILE PRINTING SOLUTIONS



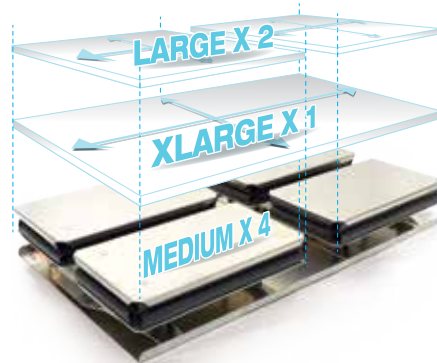
6 shirt pallet as standard



Extra large print area

## TUCLOC® PALLET SYSTEM

The **DTG 4-2-1 garment pallet system** is truly unique to the M6 Industrial printer. Print multiple garments at one time as standard, with our auto registering specialty pallet assembly. Simply bring your designs from most major graphics software into our DTG RIP templates and your artwork is easily positioned with pinpoint registration (achieved via a unique conveyor garment loading system). The micro servo motor driven conveyor system produces perfect dot registration accurate to 0.017mm.



## 4-2-1 TUCLOC® Pallet Option

Ultra-Large images or multiple prints

Easy operation



Handcrafts and fashion panels



Soft furnishings

## QUICK FACTS

- ➔ Industrial all metal build  
– IT'S TOUGH!
- ➔ Patent Pending WIMS  
(White Ink Management System)
- ➔ Seamless servo driven accuracy
- ➔ Bespoke firmware designed for textile printing
- ➔ Scalable production – print multiple garments at a time
- ➔ A new way to print – iQ Interweave  
– eliminates banding at all resolutions
- ➔ M2 Print area of 610 x 450mm (24" x 18")  
M6 Print area of 1150 x 750mm (44" x 30")
- ➔ Print 50+ large graphics on white/lights garments and 25+ large graphics on darks per hour  
– Now that's FAST!
- ➔ One pass enabled, increase your production output dramatically
- ➔ 46 pcl ink drop size scalable through all resolutions.
- ➔ Intelligent integrated RIP software with patented white under-base tools
- ➔ Consistent repeatable prints, day after day

**WIMS...** "Don't be fooled – cartridges are there only to lock out consumables. So called "closed loop systems" sound great but add little if anything to ink stability – it's simple 1st grade science – you can not syphon fluid without pressure, nor can you move ink from a cartridge or a bag without air in the system – it's how you manage the air in the inks and the subsequent settling which makes the difference. If you have to shake something to make it work... You really need to re-look at WIMS technology"

**Moishin Tiwana -  
Chemical Engineer**





## WHAT MAKES US DIFFERENT



### WIMS

With the patent pending White Ink Management System, head clogging and maintenance downtime is reduced considerably. The DTG-WIMS is the final answer to white ink prints.

By re-circulation of ink via a pressurized peristaltic pump system coupled with pressure release filters and dampers your white ink is ready to print when you are. We have reduced the maintenance and downtime currently seen in the industry and the M-Series are the best all-round white ink print systems in the world market today.



### TEXLOC PLATEN OPTIONS - SCALEABLE PRODUCTION

The M-Series is 100% flexible with a multitude of TexLoc™ platen options for kids sizes through to super wide prints.

The M-Series bed in standard configuration supports two standard shirts with a unique bridge to allow extra wide prints to a maximum of 610 x 450mm (24" x 18").

Big image area options - are available on the M2 and M6 with our unique platen drive swap out mechanism for multiple production up to 12 shirts – need to print full length jeans, towels etc. Image areas 1150 x 750mm (44" x 30") – you can configure your M-Series to your market or grow into new markets and expand your profit options – It's flexible.



### DTG ONE PASS FAST

A uniquely beneficial patent pending process that allows both white base and colors to be printed in just one pass. With the "One Pass Fast" you can offer faster turnarounds with greater speeds and gain much greater control over the color gamuts required to create truly original and fantastic color prints to a whole host of substrates.

"Up to 50% faster prints with exceptional colors and all supported with a unique easy to use RIP."



### ACTIVE PRINT HEAD COLLISION PROTECTION

By incorporating precision culminated light beam detection sensors, anything getting in the way of the print path is automatically detected, and the active drive system will drop the pallet while printing, ensuring that head strikes are drastically reduced while still maintaining your prints.



### IQ INTERWEAVE - JUST BETTER SCIENCE

The all new iQ Interweave technology is a core development in support of textile decoration. A new science that delivers greater flexibility and quality of print to a wider range of garments. More ink when and where you need it! IQ Interweave prints in a wave pattern, not staggered lines. Wave printing over grids of textiles is far superior.



### WE'RE GREEN

Or try as hard as we can to be. We are a responsible corporate company who takes our environment policies seriously. We endorse and partner with suppliers who also adopt similar principles.



### POSITIVE DAMPER FEED PRESSURE

Unlike inkjet ink used for paper printing, textile inks have a higher viscosity and surface tension and struggle with gravity fed ink systems. Consistent ink delivery means less clogging and longer prints are available without the stress for ink replenishment to the nozzle plate. The DTG Digital range uses a pressurized damper on each individual color with 1.2psi of constant pressure for better ink delivery ensuring consistent color accuracy and better reliability.



### DTG TRAINING ACADEMY

DTG Digital is the only manufacturer to provide significant after sales support and training globally with over 86 dedicated resellers. The DTG Training Academy is in Australia, Singapore, Turkey, US and UK are textile application centres that are in support of educational facilities, supporting young designers.



### LOWEST COST PER PRINT

A low cost per print is imperative in most markets. At DTG Digital we have a selection of inks for various applications. We also match quantity to cost per print requirements to help customers win important contracts. Contact your DTG Digital representative to discuss how quantity buy breaks will help your production price constraints.



### DecoNetwork™

#### WEBSTORES

Why are some online sites booming while others aren't! – Its simply all about affiliate stores, an intuitive online design process and instant SEO marketing. Deconetwork provide invaluable tools for those wanting to cash in on the online garment trading boom by providing over 15,000 webstores designed specifically for online trading. There is a host of features that ensure your web success. More details [www.deconetwork.com](http://www.deconetwork.com)



#### Download DTG Designs

#### VALUE DESIGN

Its one thing having a great website but it needs graphics that people want to buy. DTG sources leading street wear graphics from a host of designers globally and are available for download and pre prepared ready for DTG printing. There are over 1000 royalty free street wear designs, perfect for online and retail sales. Populate your web store today.





## New IQ Print Pro Color RIP



Print quality and features within a RIP – do make a difference to your overall design – if color and knock

out graphics are important to you and your customers, then the new iQRIP for the Mseries will leave you breathless.

Compatible with most file types – jpg, psd, tiff, png, tga, gif, bmp, pcx, dib. Colors are sharp and accurate – edge definition detail is sharp, user intervention is limited because the new iQRIP supports more features for industrial decoration than any other RIP for a DTG application.

White layers are auto generated with complete scalability and creates the perfect undertones for maximum presentation – precise calculation while printing to dark garments – your iQRIP sees a black shirt as an under base color and corrects accordingly – sharper prints faster whilst using less ink.



## Some of the IQ Color RIP Features

- Color Management
- Device Profiling
- Extended support for variable drop printing
- Reads and writes BMP, PCX, GIF, PNG, JPG, TGA and multi channel file formats TIFF and Photoshop
- PSD file transparency support enabled
- Transparency generator tool
- Print Queue manager
- and much more...

## FEATURES

### Color Management

- Print Pro is an ICC aware color managed application
- Uses embedded ICC profiles in the image files or assign default profile to RGB and CMYK images
- Integrated CMM
- Uses CIE L\*A\*B\* as profile connection space
- Supports D50 and D65 Illuminant for profile connection space
- Device profiling
- Support color profile generation for printing with white ink on colored textile
- Uses colored textile background as an ink

### Device Linearization

- Ink limiting
- Custom GCR/UCR settings
- Intuitive grey balancing
- Monitor calibration
- Spectrophotometer support for profile creation (separate plug in tool)

### Halftoning

- Extended support for variable drop printing
- Sophisticated dithering for highly smooth image output

### Image Handling

- Reads and writes BMP, PCX, GIF, PNG, JPG, TGA and multi channel file formats TIFF and Photoshop
- PSD file transparency support enabled
- TWAIN compatible scanner/camera support
- Memory management module for large image files
- Versatile image adjustment with color correction filters
- Image transformation, crop, rotate, flip etc
- Transparency generator tool
- EPS / PDF / AI / PS optional upgrade

### Print Queue Manager

- Simultaneous RIP and print
- RIP once print many
- Job order changing, deleting, holding for production workflow enhancement

### Port Manager

- Support File, USB TCP/IP, parallel and serial port
- Print through windows print queue both on local machine or network printer

### Garment Specific

- Automatic patented white underbase generator
- Choke feature for white underbase
- White highlight generator

### System Requirements

- Microsoft® Windows® XP or later
- Processor: requires a PC based on Quad Core (2.2 GHz) technology or higher
- RAM: 2GB DDR2 or more
- Hard disk: hard drive with SATA interface and 100 GB free disk space
- Monitor: SVGA or better with resolution of 800 x 600 or better. 16 Bits or more color support recommended
- Ports: 2 x USB recommended

# pigment.<sup>®</sup>inc

digital... inks and coatings

At DTG Digital “we know textiles” and the right ink does make all the difference. DTG Digital works in collaboration with Pigmentinc<sup>®</sup> exclusively with the following ink sets:

- DTG.P30i Pigments CMYK & W
- DTG.P40i Sublimation [12 colors inc. neon]
- DTG.P50i Reactives [9 colors]

Time tested and production proven since late 2004 the DTG pigment ink series have been the powerhouse in textile production. We have expanded with a new P30i pigment series to build on the legacy which has given DTG Digital the market edge with superior color. Our new P30i series details:

- White ink to dark poly with stretch
- Better colors
- Less settling
- Better head conformity
- Better wash and hand



Typical Materials	White Ink	Color Ink
Cotton	✓	✓
Cotton Blends	✓	✓
Polyester	✓	✓
Poly-Viscose	✓	✓
Rayon	✓	✓
Silk	✓	✓
Wool	✓	✓
Spandex	✓	✓
... and many more		

## pigment.<sup>®</sup>inc

digital... inks and more

### P30i GARMENT Pigment



### P40i TEXTILE Sublimation



### P50i TEXTILE Reactive



### P70i UV LED



## SOFT FURNISHING



## KIDS WEAR

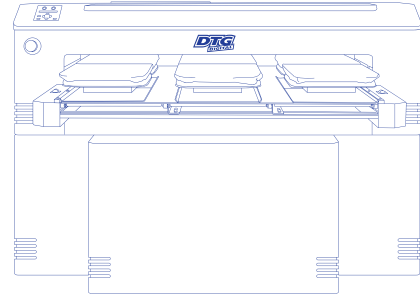
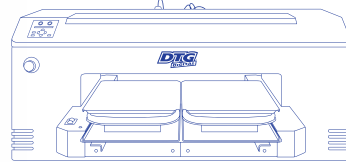
## JEANS



## PRINT ON SEAMS



# → SPECIFICATIONS



Key Specifications	M2	M6
Printhead	Piezo 180 nozzles per channel	
Colour	8 (Dual CMYK or 4* White plus CMYK)	
Print Area	610mm x 450mm (24" x 18")	1150mm x 750mm (44" x 30")
Inks	DTG inks - Piezo compatible pigments	
Ink Delivery	Bottle - pressurised CYMK, Bottle - pressurised re-circulation - white (WIMS)	
Drive	Processor driven conveyor	
Operating System	Vista, XP, Win7-10 - DTG Rip Pro	
Electrical	AC 110-240V, 50-60Hz, 10A, Consumption - 55W or less, Standby - 5W, Off - 1W	
Width x Depth x Height (mm)	1220(W) x 550(H) x 1000(L)mm 48"(W) x 21.7"(H) x 39"(L)	1810(W) x 1250(H) x 1300(L)mm 71"(W) x 49"(H) x 51"(L)
Weight [Box weight may vary]	96kg (212lb) (boxed weight will vary)	170kg (375lb) (boxed weight will vary)

## ALL OVER PRINTS



## FINE DETAIL

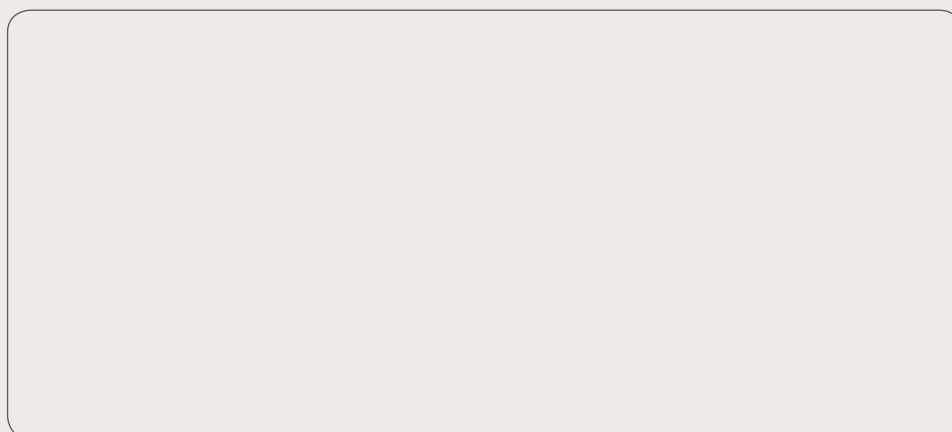


## PRINT ON BLACK





We're **green**, or try as hard as we can to be a responsible corporate company who takes our environment policies seriously. We endorse and partner with suppliers who also adopt similar principles.



Print trials must be undertaken prior to production – no warranties, express or implied, are given in connection with the accuracy or completeness of any of the information contained herein. DTG DIGITAL, FORWARD THINKING and PIGMENTINC are registered trade marks and or copyright of Impression Technology Pty Ltd, Australia. All copyright reserved.

[www.dtgdigital.com](http://www.dtgdigital.com)